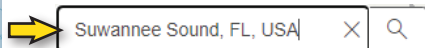




NOAA Custom Chart *Quick Start Guide*

1. Find your chart area



Typing into the **Find address or place** field will display a list of suggested locations to choose from. Click on a location to zoom to that spot.

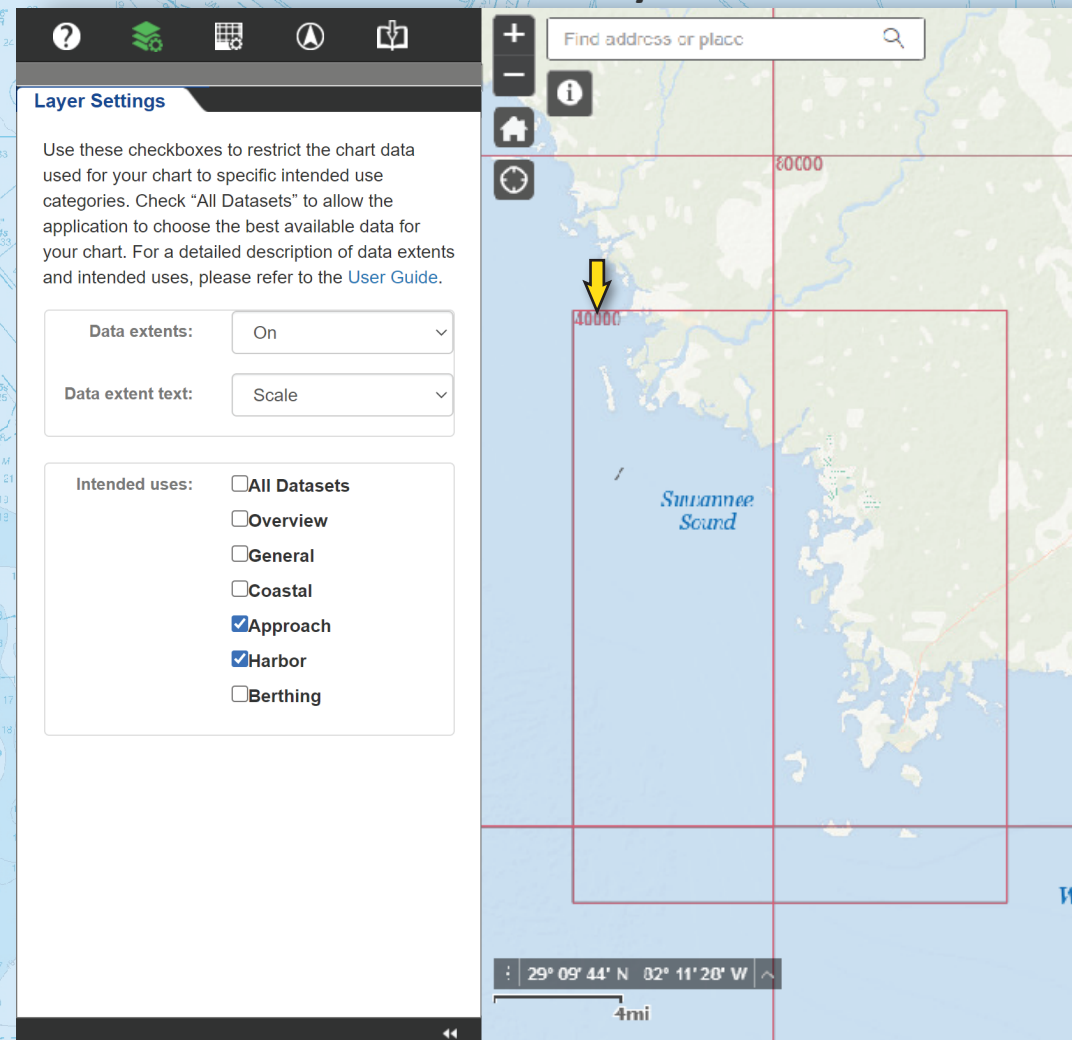
Use the **Plus** and **Minus** icons or your mouse wheel to zoom in and out of the map.

Use the **My Location** icon to center the map at your current position.

Left-Click and hold mouse to pan on the map.

Click the **Default extent** icon to zoom to the full map extent.

2. Determine the best scale for your custom chart



Use these map navigation tools to move around the map to an area where you want to build a chart.

Use the **Layer Settings** panel to explore the **Data extents** and **Intended uses** information within the **NCC Map Window**.

In this example, the most detailed data available for Suwannee Sound is 1:40,000 as shown in the upper-left corner of the red Minimum Bounding Rectangle (MBR).

3. Enter your chart parameters

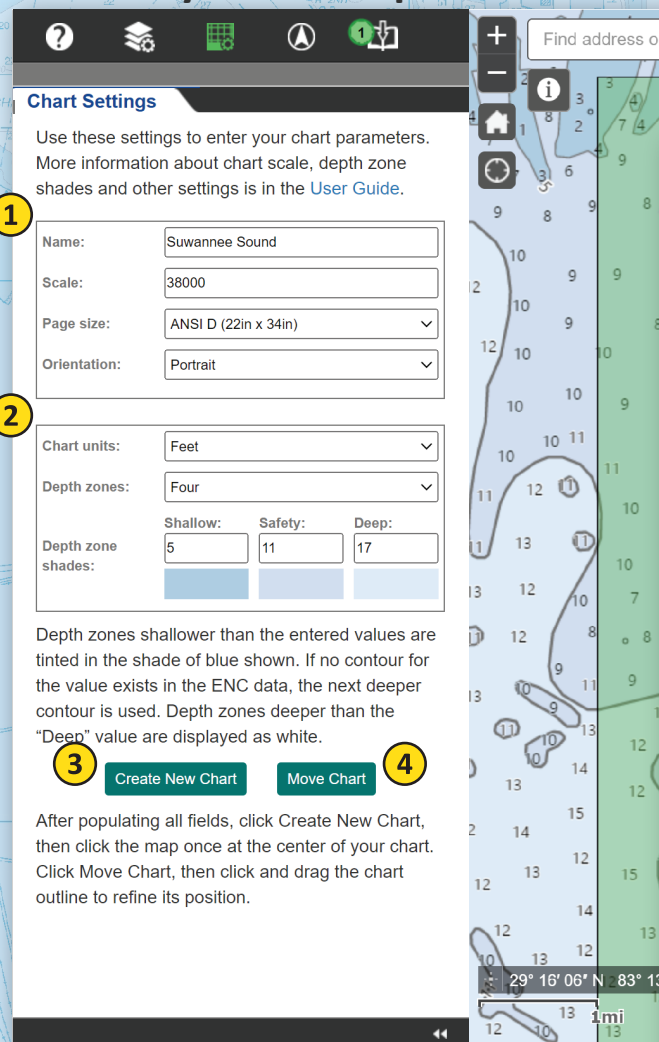


Chart Settings

Use these settings to enter your chart parameters. More information about chart scale, depth zone shades and other settings is in the User Guide.

1 Name: Suwannee Sound

Scale: 38000

Page size: ANSI D (22in x 34in) ▼

Orientation: Portrait ▼

2 Chart units: Feet ▼

Depth zones: Four ▼

Depth zone shades:	Shallow:	Safety:	Deep:
	5	11	17

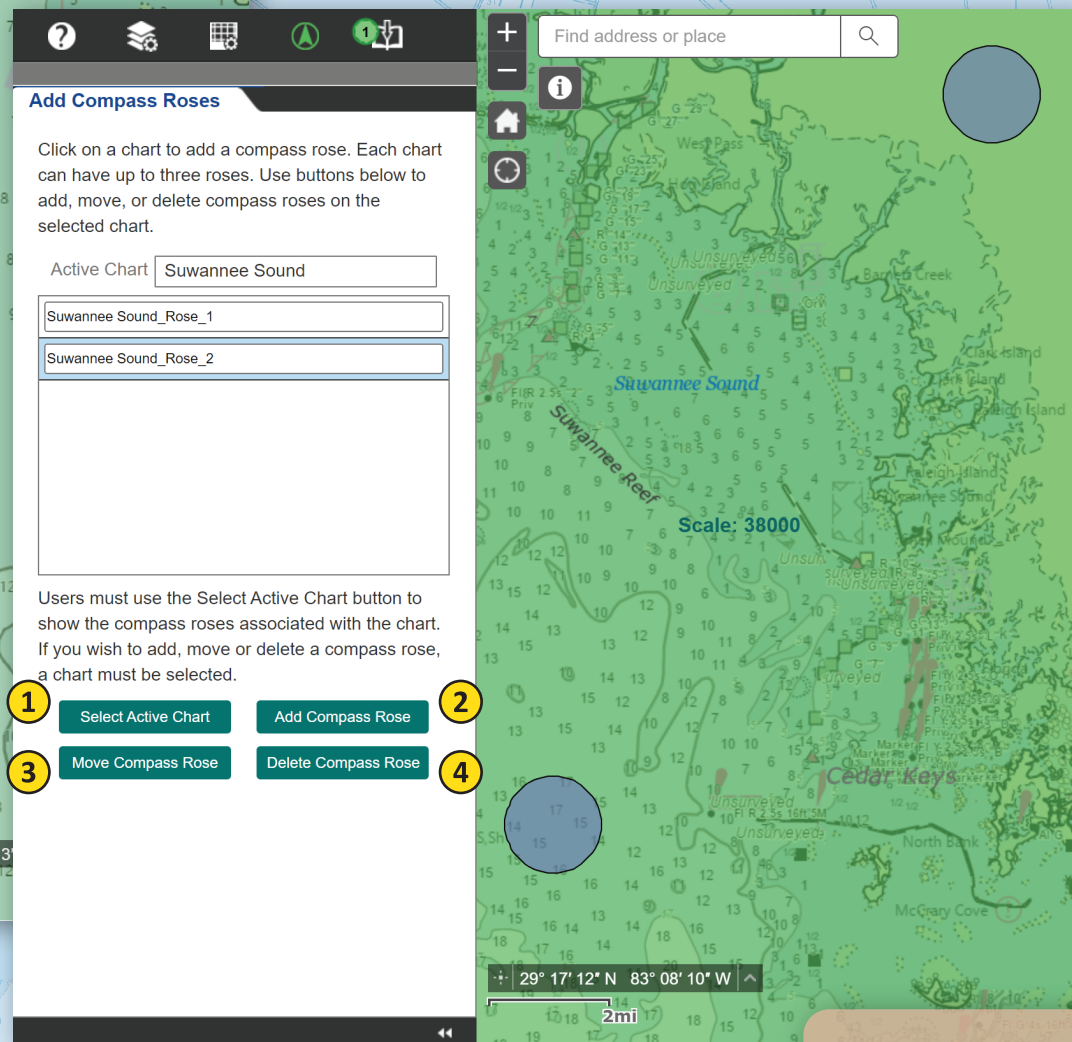
3 Create New Chart 4 Move Chart

Use the **Chart Settings** panel to enter your custom chart parameters. Once all are set, click **Create New Chart**. If there is a need to refine the position of the chart footprint, click **Move Chart**.

In this example, a 1:38,000 chart named Suwannee Sound was created on a 22 x 34 inch, portrait-oriented sheet with the default units and depth zone settings.

4. Add compass roses

Use the **Add Compass Roses** panel to add up to three compass roses to your chart.



Add Compass Roses

Click on a chart to add a compass rose. Each chart can have up to three roses. Use buttons below to add, move, or delete compass roses on the selected chart.

Active Chart: Suwannee Sound

Suwannee Sound_Rose_1

Suwannee Sound_Rose_2

Users must use the Select Active Chart button to show the compass roses associated with the chart. If you wish to add, move or delete a compass rose, a chart must be selected.

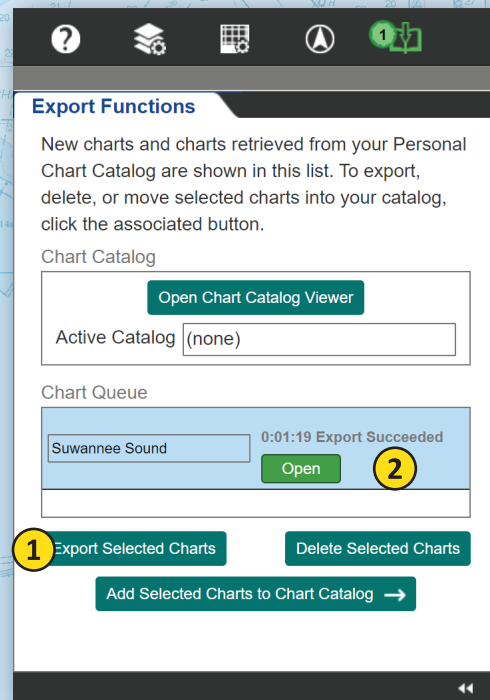
1 Select Active Chart 2 Add Compass Rose

3 Move Compass Rose 4 Delete Compass Rose

Click **Select Active Chart** to choose the chart. Then, click the **Add Compass Rose** button and click inside the chart extent. If there is a need to refine the position of a rose, click **Move Compass Rose** to move a selected rose. If you need to delete a rose, select it in either the menu or the map and click **Delete Compass Rose**.

It is best to place compass roses on land or in deep open water to ensure they do not hide any important chart detail.

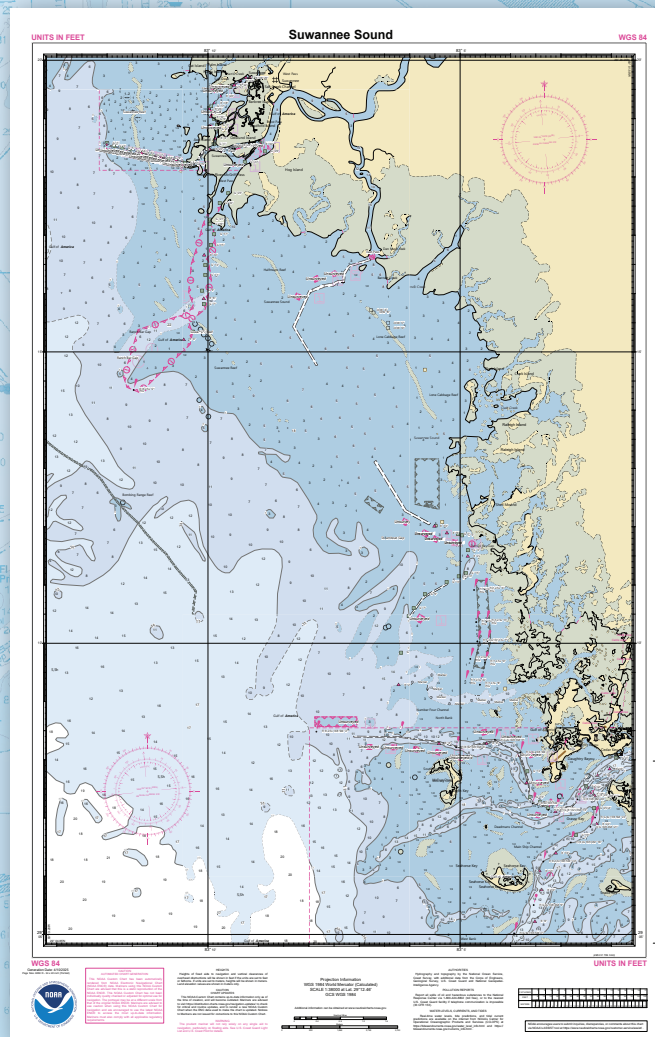
5. Export your chart



Use the **Export Functions** panel to export your custom chart to a printable PDF file. In the lower **Chart Queue** box, select the chart and click the **Export Selected Charts** button below. Once the export succeeds, a green **Open** button appears.

*Most web browsers will open the custom chart PDF in a new browser tab. If the file does not open, check your browser settings. If a pop-up blocker is enabled, add the NCC site to a list of exceptions, or right-click / command-click on the **Open** button to see other display or download options.*

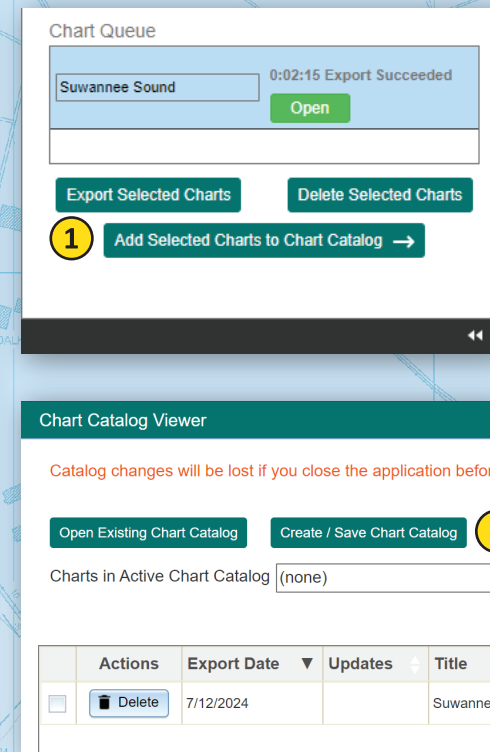
6. Examine your chart output



Clicking the **Open** button opens a new tab on your web browser with the custom chart PDF file. If the output is suitable to your needs, you may choose to download the file to your local device or print it.

A third option includes saving the chart to a **Personal Chart Catalog**, which allows you to keep your chart designs or share them with others in a GeoJSON file.

7. Save your chart



Once you are satisfied with your chart, use the **Add Selected Charts to Chart Catalog** button to open the **Chart Catalog Viewer** dialog. In the viewer window, click the **Create / Save Chart Catalog** button. The web browser will open a **Save As** dialog. Name the catalog GeoJSON a memorable name and click **Save**. Any charts in the **Chart Catalog** will be saved to the GeoJSON file.

Catalog changes will be lost if you close the browser window before saving your Personal Chart Catalog GeoJSON file.

Load your personal chart catalog

Export Functions

New charts and charts retrieved from your Personal Chart Catalog are shown in this list. To export, delete, or move selected charts into your catalog, click the associated button.

Chart Catalog

2 Open Chart Catalog Viewer

Active Catalog (none)

Chart Queue

Export Selected Charts Delete Selected Charts

Add Selected Charts to Chart Catalog →

Once you open the application, open the **Export Functions** panel. In the **Chart Catalog** box, click the **Open Chart Catalog Viewer** button. In the viewer window, click the **Open Existing Chart Catalog** button and navigate to the location of your **Chart Catalog** GeoJSON file. Select one file and click **Open**. A list of charts will populate the table. Click the check boxes to select each chart you wish to export. Click the ← **Add Selected Charts to Chart Queue**.

Chart Catalog Viewer

Catalog changes will be lost if you close the application before clicking "Create / Save"

3 Open Existing Chart Catalog Create / Save Chart Catalog

Charts in Active Chart Catalog (none)

Actions	Export Date	Updates	Title	Scale
---------	-------------	---------	-------	-------

Open

Docu... > Personal Chart C...

Organize New folder

This PC 3D Objects Desktop Documents Downloads Music Pictures Videos

Florida_WestCoast.geojson Washington_PugetSound.geojson **4**

File name: Washington_PugetSound.geojson GEOJSON File (*.geojson)

5 Open Cancel

Chart Catalog Viewer

Catalog changes will be lost if you close the application before clicking "Create / Save"

Open Existing Chart Catalog Create / Save Chart Catalog

Charts in Active Chart Catalog Washington_PugetSound.geojson

Actions	Export Date	Updates	Title	Scale
<input checked="" type="checkbox"/> Delete	4/19/2023		Port Orchard	10000
<input checked="" type="checkbox"/> Delete	4/18/2023		Elliott Bay	10000
<input checked="" type="checkbox"/> Delete	4/18/2023		Puget Sound-Seattle to Bremerton	25000

Select All Select Updated Clear Selection Delete Selected

6 ← Add Selected Charts to Chart Queue **7**

Select one or more charts in the **Chart Queue** and click **Export Selected Charts** button.

At this time, you may add or remove charts from the **Chart Catalog**. Changes must be saved before closing the web browser.

Export Functions

New charts and charts retrieved from your Personal Chart Catalog are shown in this list. To export, delete, or move selected charts into your catalog, click the associated button.

Chart Catalog

Open Chart Catalog Viewer

Active Catalog Washington_PugetSound.geojson

Chart Queue

8 Port Orchard Elliott Bay Puget Sound-Seattle to Bremerton

Export Selected Charts Delete Selected Charts

Add Selected Charts to Chart Catalog → **9**

Check your custom charts for updates

Chart Catalog Viewer

Catalog changes will be lost if you close the application before clicking "Create / Save Chart Catalog".

1 **NEW - Check for Updates**
Opens NOAA Navigation Updates Website

Open Existing Chart Catalog **Create / Save Chart Catalog**

Charts in Active Chart Catalog

Search

	Actions	Export Date	Updates	Title	Scale
<input type="checkbox"/>		4/18/2023	Available	Houston Ship Channel - Hirsh Road Bridge to Milan Street Bridge	10000
<input type="checkbox"/>		4/18/2023	Available	Houston Ship Channel - Magnolia Park to Hirsh Road Bridge	10000
<input type="checkbox"/>		4/18/2023	Available	Houston Ship Channel - Upper Clinton Bend to Magnolia Park	10000
<input type="checkbox"/>		4/18/2023	Available	Syms Bayou	10000

0 of 7 Selected

Select All **8** **Select Updated** **Clear Selection** **Delete Selected**

← Add Selected Charts to Chart Queue

Catalog changes will be lost if you close the application before clicking "Create / Save Chart Catalog".

Open the Chart Catalog Viewer and click on the **NEW - Check for Updates** button. This will open the NOAA Navigation Updates (NNU) website at <https://distribution.charts.noaa.gov/navigation-updates/>.

NOAA Navigation Updates website

? 2 🔍 🔼 📄

Advanced Search

ENC:

Apply **Remove**

NOAA Custom Chart

3 **Open Chart Catalog Viewer**

Active Catalog:

Remove

Chart Catalog Viewer

Catalog updates will be lost if you close the application before clicking "Open Existing Chart Catalog" or "Save Updated Chart Catalog".

4 **Open Existing Chart Catalog** **Save Updated Chart Catalog**

Charts in Active Chart Catalog

	Updates	Export Date	Title
<input checked="" type="checkbox"/>	Available	4/18/2023	Houston Ship Channel - Hirsh Road Bridge to Milan Street Bridge
<input checked="" type="checkbox"/>	Available	4/18/2023	Houston Ship Channel - Magnolia Park to Hirsh Road Bridge
<input checked="" type="checkbox"/>	Available	4/18/2023	Houston Ship Channel - Upper Clinton Bend to Magnolia Park
<input checked="" type="checkbox"/>	Available	4/18/2023	Syms Bayou

5 **Select All** **Clear Selection**

6 **🔍 Search Updates for Selected Charts**

Catalog updates will be lost if you close the application before clicking "Open Existing Chart Catalog" or "Save Updated Chart Catalog".

Chart Catalog Viewer

Catalog updates will be lost if you close the application before clicking "Open Existing Chart Catalog" or "Save Updated Chart Catalog".

Open Existing Chart Catalog 7 **Save Updated Chart Catalog**

Charts in Active Chart Catalog

	Updates	Export Date	Title
<input checked="" type="checkbox"/>	Available	4/18/2023	Houston Ship Channel - Hirsh Road Bridge to Milan Street Bridge
<input checked="" type="checkbox"/>	Available	4/18/2023	Houston Ship Channel - Magnolia Park to Hirsh Road Bridge
<input checked="" type="checkbox"/>	Available	4/18/2023	Houston Ship Channel - Upper Clinton Bend to Magnolia Park
<input checked="" type="checkbox"/>	Available	4/18/2023	Syms Bayou

5 **Select All** **Clear Selection**

6 **🔍 Search Updates for Selected Charts**

Catalog updates will be lost if you close the application before clicking "Open Existing Chart Catalog" or "Save Updated Chart Catalog".

In the **Advanced Search** panel on the NNU, click on **Open Chart Catalog Viewer**. Load the personal chart catalog of your choosing by clicking **Open Existing Chart Catalog**. When the charts populate the table, click **Select All**, and then **Search Updates for Selected Charts**. You can then save an updated catalog by clicking **Save Updated Chart Catalog**. You then can open the updated catalog in the NCC and reprint the updated charts.